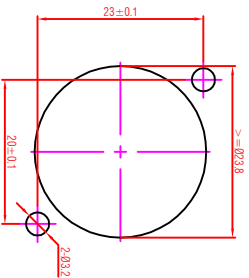
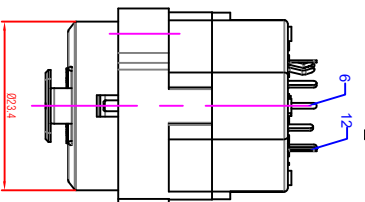
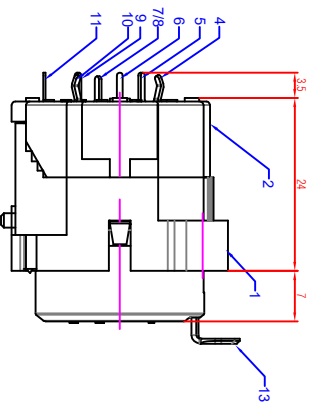
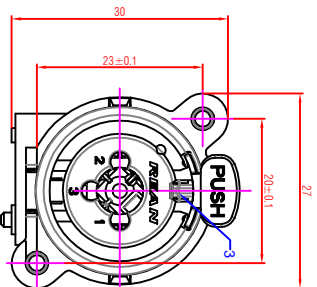
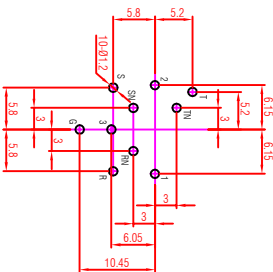


PANEL CUTOUT (FRONT SIDE)

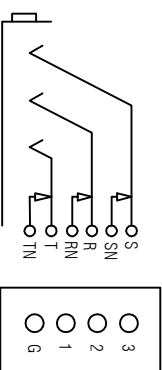


PCB LAYOUT (COMPONENT SIDE)



NORMALLING-SCHEMES

JACK - NORMALLING



13	PUSH LATCH	STEEL, NICKEL PLATED
12	CONTACT (I)	PHOSPHOR BRONZE, NI+AU+SN PLATED
11	GROUND CONTACT (G)	PHOSPHOR BRONZE, SILVER PLATED
10	CONTACT (S)	PHOSPHOR BRONZE, SILVER PLATED
9	CONTACT (R)	PHOSPHOR BRONZE, SILVER PLATED
8	CONTACT (RN)	PHOSPHOR BRONZE, SILVER PLATED
7	CONTACT (SN)	PHOSPHOR BRONZE, SILVER PLATED
6	CONTACT (2&3)	PHOSPHOR BRONZE, NI+AU+SN PLATED
5	CONTACT (TN)	PHOSPHOR BRONZE, SILVER PLATED
4	CONTACT (I)	PHOSPHOR BRONZE, SILVER PLATED
3	PUSH SPRING	STEEL, HEAT TREATMENT
2	COVER	PA6
1	HOUSING	PA6
NO.	PART NAME	MATERIAL

Rev:	Revision Details	Date:	Year:	Model:	Material:	Scale:	Design:	Date:	Name:
					HEADQUARTERS IS THE PROPERTY OF KALINK	2 : 1	NO PART HEREIN SHALL BE REPRODUCED OR USED	2018.02.28	KoziyP
					OWNER	(A3)	Checked:	2018.02.28	Adrian
					TITLE:		Approved By:		
					RCJ01F-IV		Signature:		1
					REXAN		Drawing No:		1