

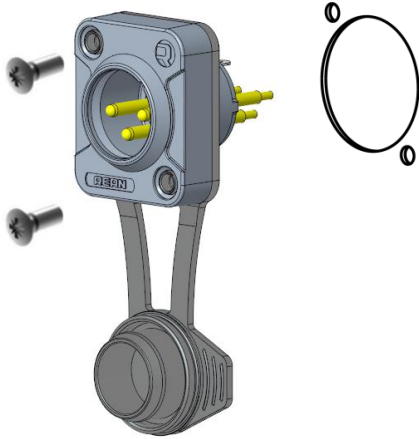


ASSEMBLY INSTRUCTION

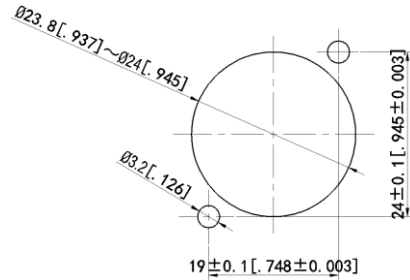
IP65 XLR Chassis Connector

RRX*M-Z-012-0/RRX*F-Z-012-0/RRX*MF-Z-012-0

(A) Chassis connector (Single)



Panel cut out dimension



RRX3M-Z-012-0



RRX5M-Z-012-0

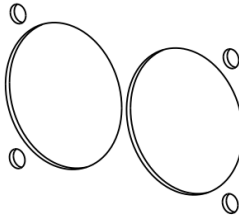
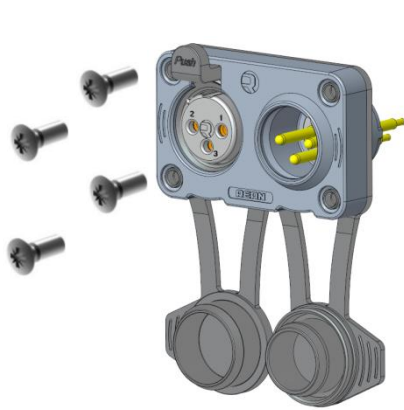


RRX3F-Z-012-0

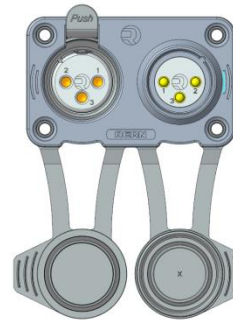
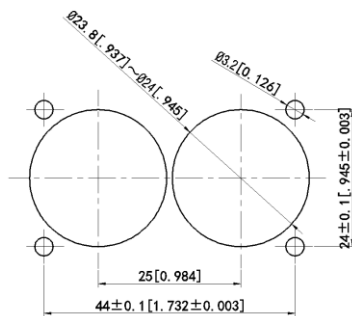


RRX5F-Z-012-0

(B) Chassis connector (Combined)



Panel cut out dimension



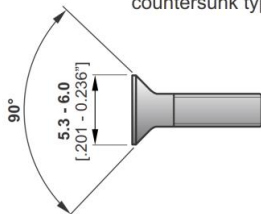
RRX3MF-Z-012-0



RRX5MF-Z-012-0

(C) Recommended screw

M3 stainless steel countersunk type



IP65 XLR Chassis Connectors:

Find more details on

www.rean-connectors.com



Neutrik AG LI T: +423/237 2424 F: +423/232 5393 Neutrik France FR T: +33 1/4131 6750 F: +33 1/4131 0511
 Neutrik USA Inc. USA T: +1 704/972 3060 F: +1 704/438 9202 Neutrik Tokyo Ltd. JP T: +81 3/3663 4733 F: +81 3/3663 4796
 Neutrik (UK) Ltd. UK T: +44 1983/811 441 F: +44 1983/811 439 Neutrik Hong Kong Ltd. HK T: +852/2687 6055 F: +852/2687 6052
 Neutrik Vertriebs GmbH DE/NL/AT/DK T: +49 8131/280 890 F: +49 8131/280 830

Draft Nr.: NCN | Update: 2023-02-28 | Data subject to change without prior notice. © 2021 REAN® 2021 REAN® is registered trademark of Neutrik AG. ALL RIGHTS RESERVED.

www.rean-connectors.com

REAN®