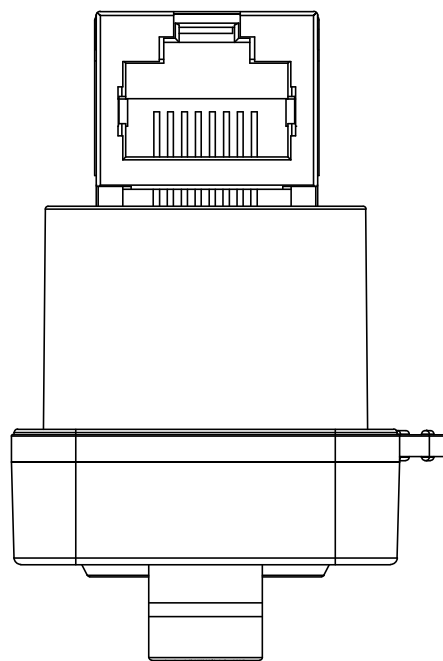
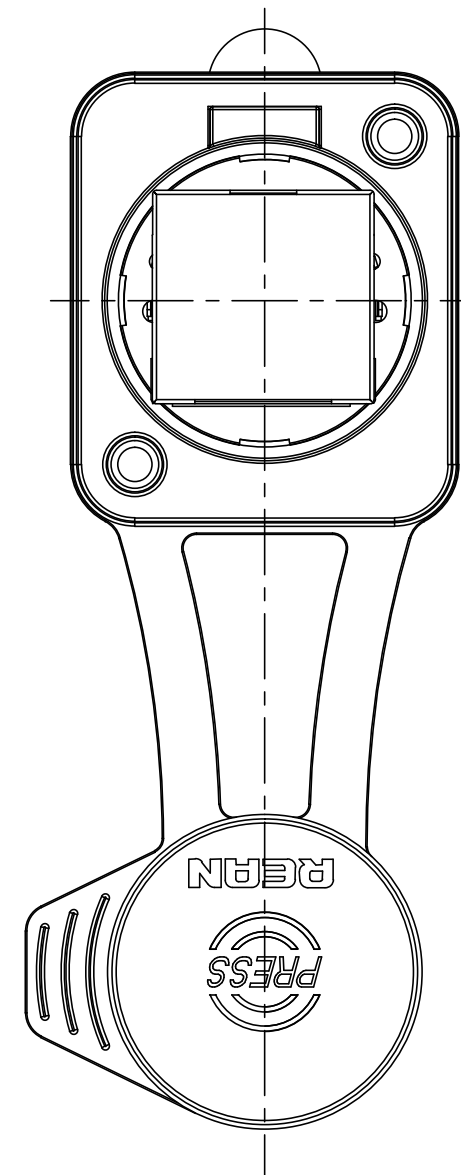
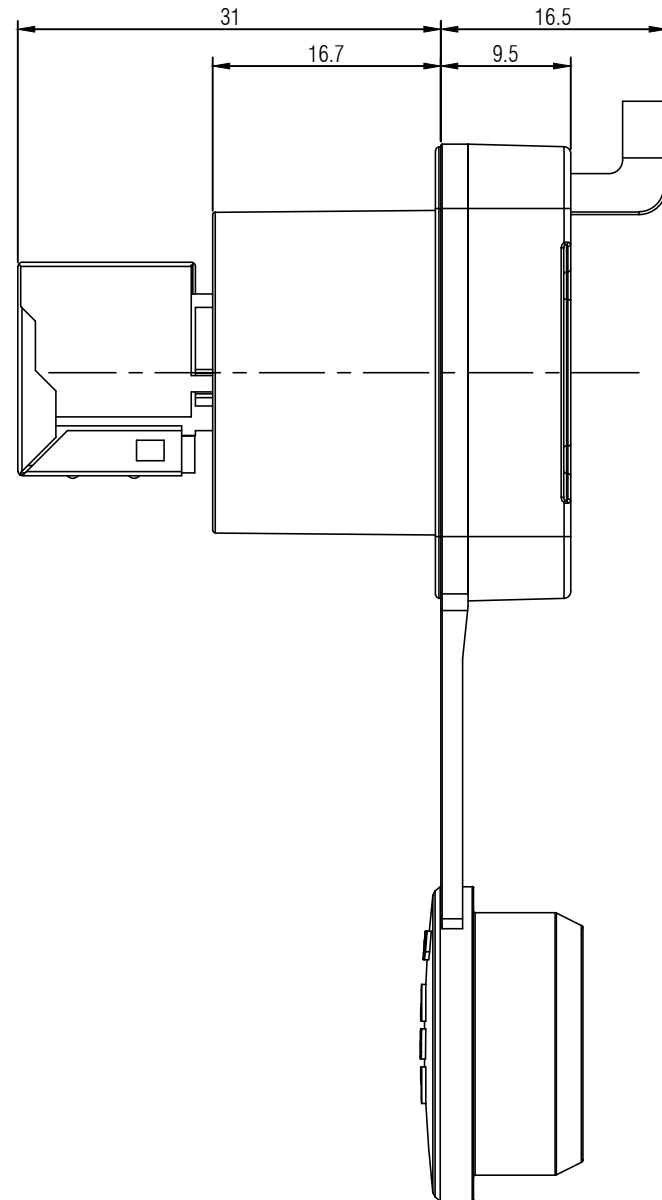
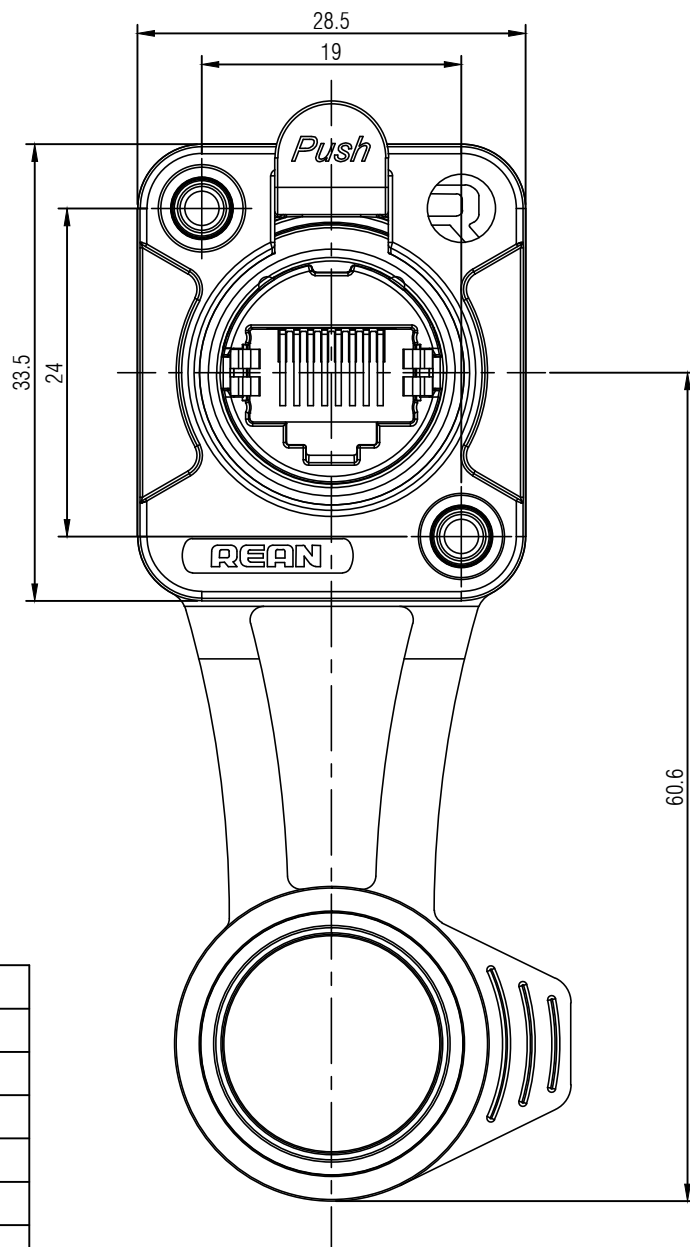
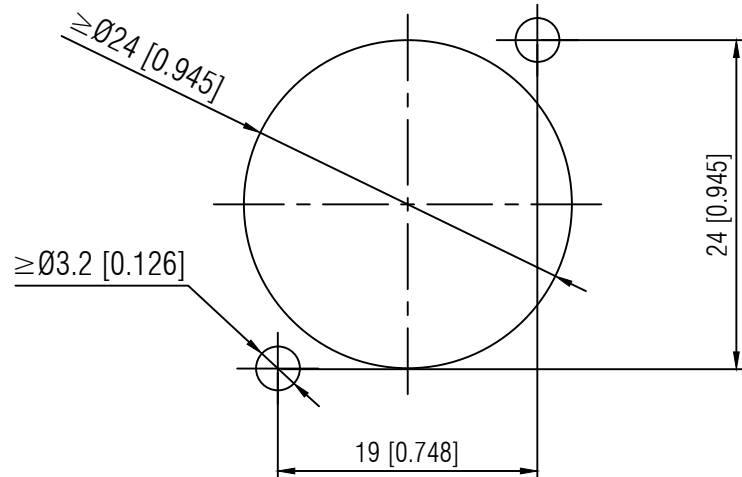


Panel Cut out dimension



| | |
|---------------------------------------|------------------------|
| ◆电气性能 / Electrical | |
| -接触电阻 / Contact resistance | < 100mΩ |
| -绝缘强度 / Dielectric strength | 1kVdc |
| -频率范围 / Frequency range | 1-100 MHz |
| -绝缘电阻 / Insulation resistance | > 0.5 GΩ |
| -单个触点额定电流 / Rated current per contact | 1.5A |
| -额定电压 / Rated voltage | < 50 V |
| -传输性能 / Transmission performance | CAT 5e |
| ◆机械性能 / Mechanical | |
| -插入力 / Insertion force | ≤ 60 N |
| -拔出力 / Withdrawal force | ≤ 60 N |
| -使用寿命 / Lifetime | 1,000 mating cycles |
| -面板厚度 / Panel thickness | 9.5mm |
| -锁紧装置 / Locking device | 闩式锁 / Latch lock |
| -底座形状 / Chassis shape | D |
| ◆材料 / Material | |
| 1.触点电镀 / Contact plating | 镀金 / Gold Plating |
| 2.触点 / Contacts | Bronze |
| 3.外壳 / Shell | Zinc |
| 4.外壳电镀 / Shell plating | 镀黑 / Black Plating |
| ◆环境 / Environmental | |
| 1.可燃性 / Flammability | UL 94 V-0 |
| 2.符合标准 / Standard compliance | TIA/EIA 586B, IEC11801 |
| 3.运行温度 / Temperature range | -30°C to +80°C |
| 4.防护等级 / Protection class | IP65 and Air tightness |

Note:
 1. All dimensions in mm.
 2. Tolerances not specified is ±0.1mm.

| | | | | | | | |
|--|--|--|--|------------------|-------------------------|------------|---------------|
| THIS DOCUMENT IS THE PROPERTY OF NEUTRIK. NO PART THEREOF MAY BE REPRODUCED AND USED WITHOUT THE PRIOR WRITTEN CONSENT OF THE OWNER | | | | Material: | Scale: 2 : 1 (A3) | Date: | Name: |
| | | | | | | 2023.01.09 | Chenbin.Zhang |
| Title: RRE8F-Z-011 | | | | Replaced By: | | 1 | |
| | | | | | | Replaces: | |
| Rev. | | | | Revision Details | | Date | Name |
| REAN | | | | Drawing No.: | | | |