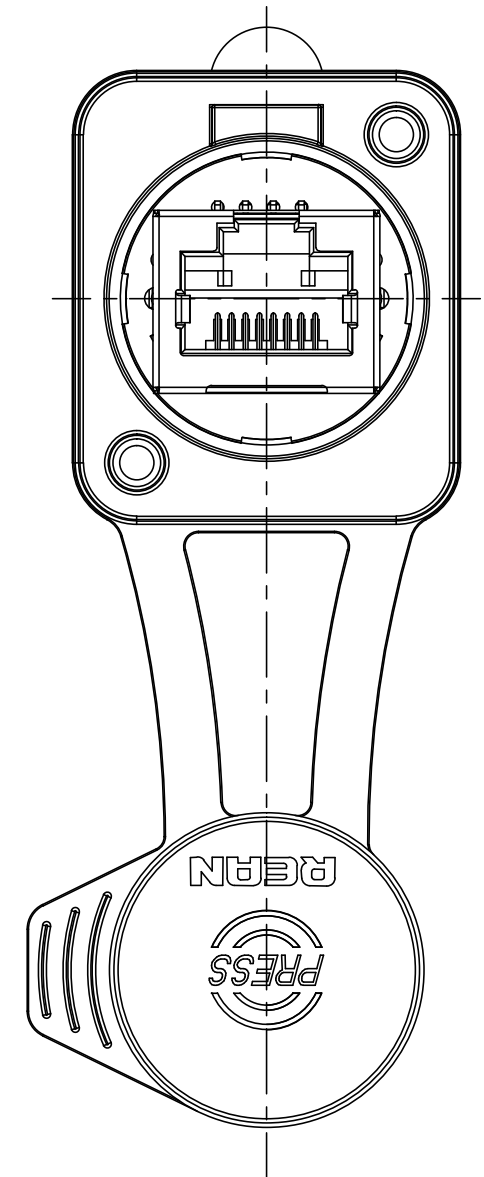
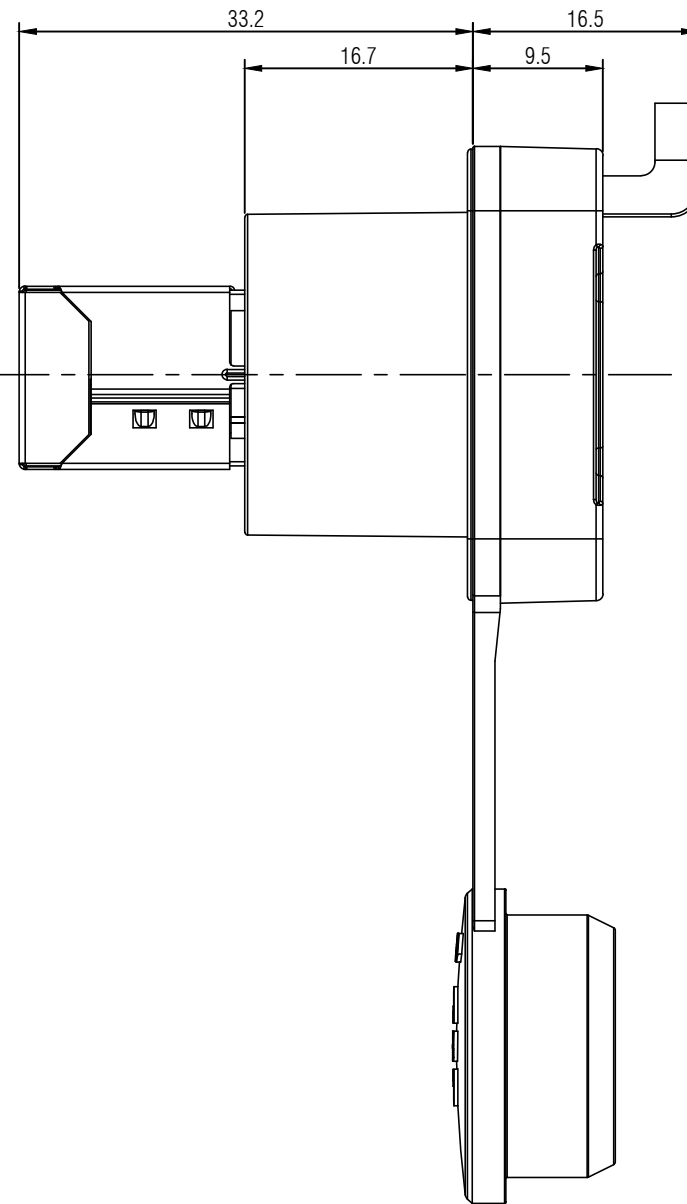
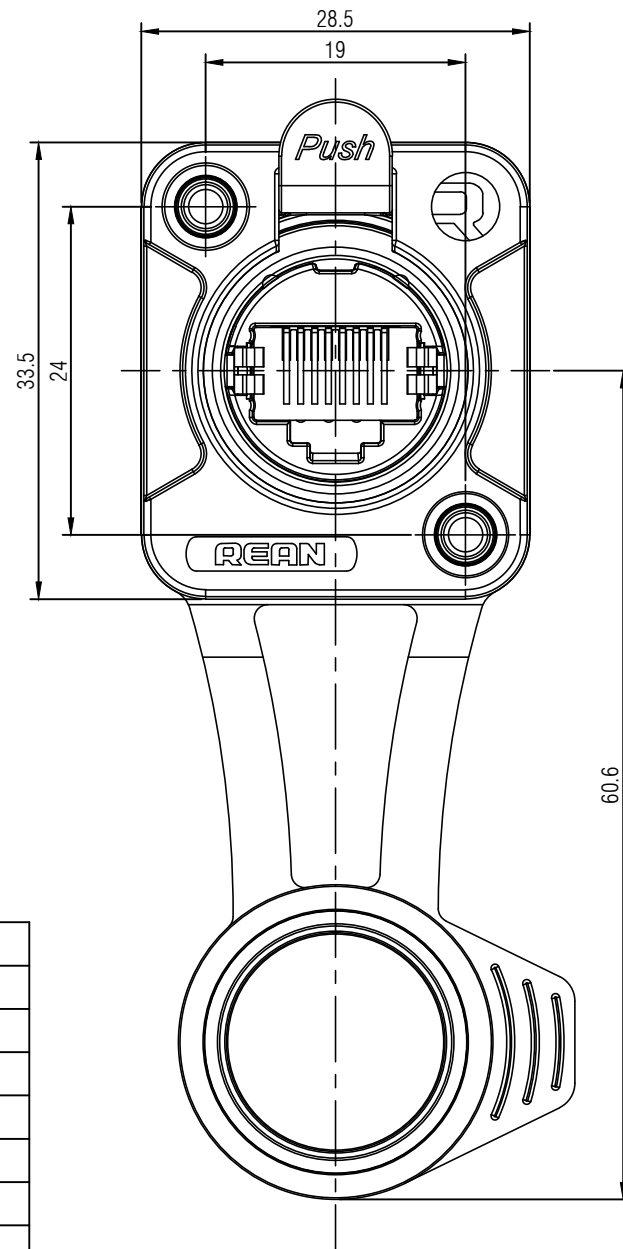
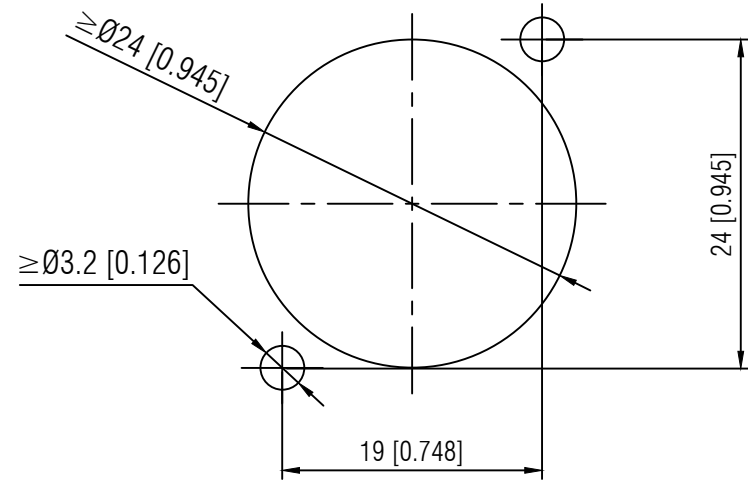


Panel Cut out dimension



◆电气性能 / Electrical	
-接触电阻 / Contact resistance	<100mΩ
-绝缘强度 / Dielectric strength	1kVdc
-频率范围 / Frequency range	1-100 MHz
-绝缘电阻 / Insulation resistance	>0.5 GΩ
-单个触点额定电流 / Rated current per contact	1.5A
-额定电压 / Rated voltage	<50 V
-传输性能 / Transmission performance	CAT 5e
◆机械性能 / Mechanical	
-插入力 / Insertion force	≤60 N
-拔出力 / Withdrawal force	≤60 N
-使用寿命/Lifetime	1,000 mating cycles
-面板厚度 / Panel thickness	9.5mm
-锁紧装置 / Locking device	闩式锁/Latch lock
-底座形状 / Chassis shape	D
◆材料 / Material	
1.触点电镀 / Contact plating	镀金 / Gold Plating
2.触点 / Contacts	Bronze
3.外壳/ Shell	Zinc
4.外壳电镀 / Shell plating	镀黑 / Black Plating
◆环境 / Environmental	
1.可燃性 /Flammability	UL 94 V-0
2.符合标准 / Standard compliance	TIA/EIA 586B, IEC11801
3.运行温度 / Temperature range	-30°C to +80°C
4.防护等级 / Protection class	IP65 and Air tightness

Note:

1. All dimensions in mm.
2. Tolerances not specified is ±0.1mm.

THIS DOCUMENT IS THE PROPERTY OF NEUTRIK. NO PART THEREOF MAY BE REPRODUCED AND USED WITHOUT THE PRIOR WRITTEN CONSENT OF THE OWNER				Material:	Scale: 2 : 1 (A3)	Date:	Name:
						2023.01.09	Chenbin.Zhang
Title: RRE8F-Z-010				Replaced By:	1		
					Replaces:	1	
Rev.				Revision Details		Date	Name
REAN				Drawing No.:			