



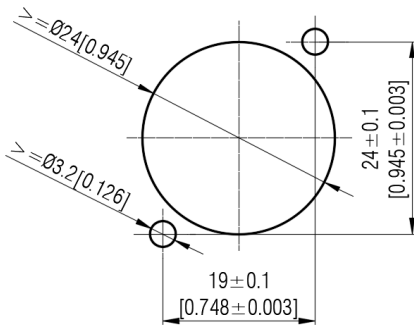
ASSEMBLY INSTRUCTION

IP65 Power Receptacle RRAC3F-X-011

(A) Chassis connector



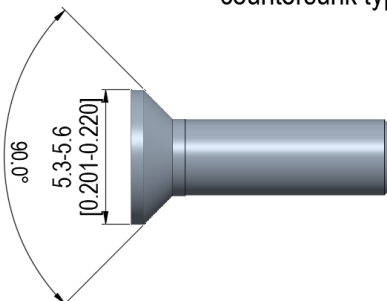
(B) Panel cut out dimension



(C) Recommended screw

Suggestion: Tightening torque MA = 0.4-0.5 Nm.

M3 stainless steel
countersunk type



IP65 Power Receptacle:
Find more details on
www.rean-connectors.com

