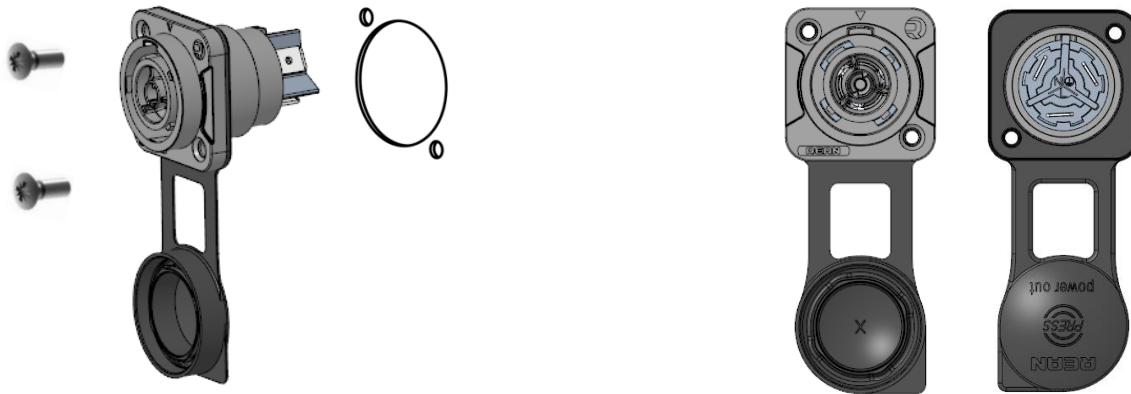




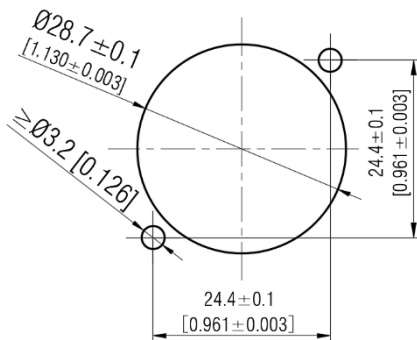
# ASSEMBLY INSTRUCTION

## IP65 Power Receptacle RRAC3F-X-010

### (A) Chassis connector

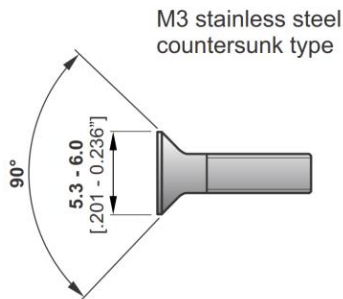


### (B) Panel cut out dimension



### (C) Recommended screw

Suggestion: Tightening torque  $M_A = 0.4-0.5 \text{ Nm}$ .



IP65 Power Receptacle:  
Find more details on  
[www.rean-connectors.com](http://www.rean-connectors.com)

