

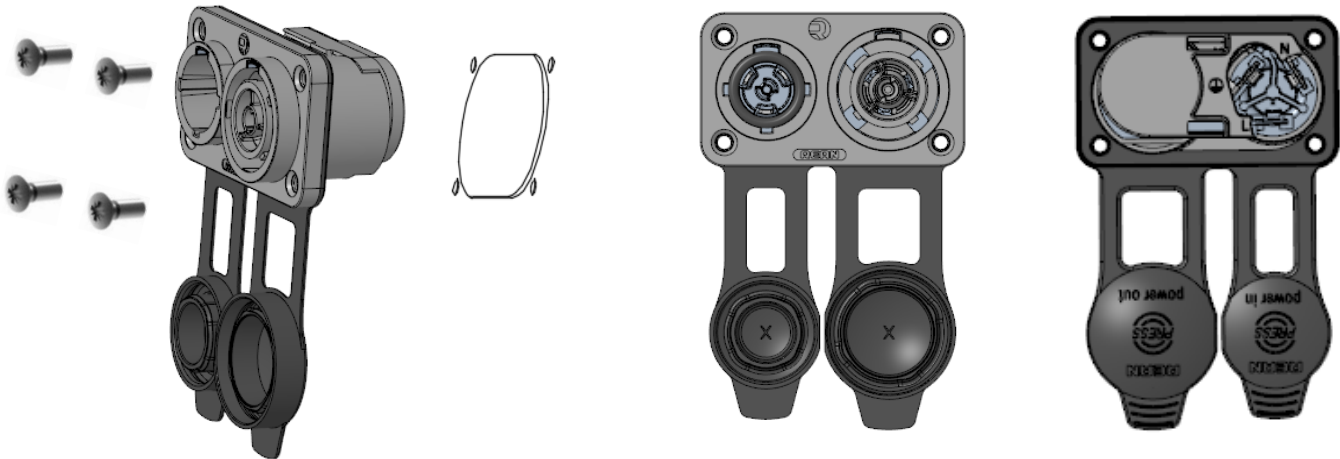


ASSEMBLY INSTRUCTION

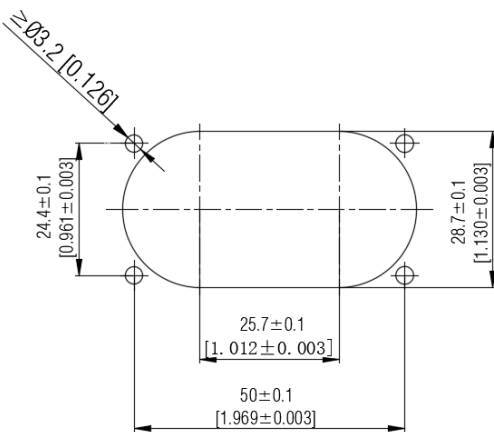
IP65 Power Receptacle

RRAC3MF-X-010

(A) Chassis connector

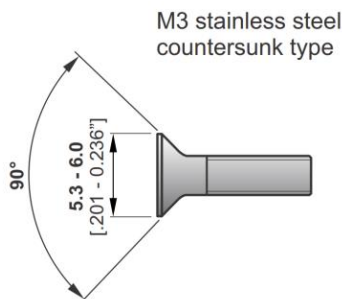


(B) Panel cut out dimension



(C) Recommended screw

Suggestion: Tightening torque $M_A = 0.4-0.5$ Nm.



IP65 Power Receptacle:
Find more details on
www.rean-connectors.com



Neutrik AG Li T: +423/237 24 24 F: +423/232 53 93 Neutrik France FR T: +33 1/4131 6750 F: +33 1/4131 0511
 Neutrik USA Inc. USA T: +1 704/972 3050 F: +1 704/438 9202 Neutrik Tokyo Ltd. JP T: +81 3/3663 4733 F: +81 3/3663 4796
 Neutrik (UK) Ltd. UK T: +44 1983/811 441 F: +44 1983/811 439 Neutrik Hong Kong Ltd. HK T: +852/2687 6055 F: +852/2687 6052
 Neutrik Vertriebs GmbH DE/NL/AT/DK T: +49 8131/280 890 F: +49 8131/280 830

Draft Nr.: NCN | Update: 2023-10-31 | Data subject to change without prior notice. © 2021 REAN® 2021 REAN® is registered trademark of Neutrik AG. ALL RIGHTS RESERVED.